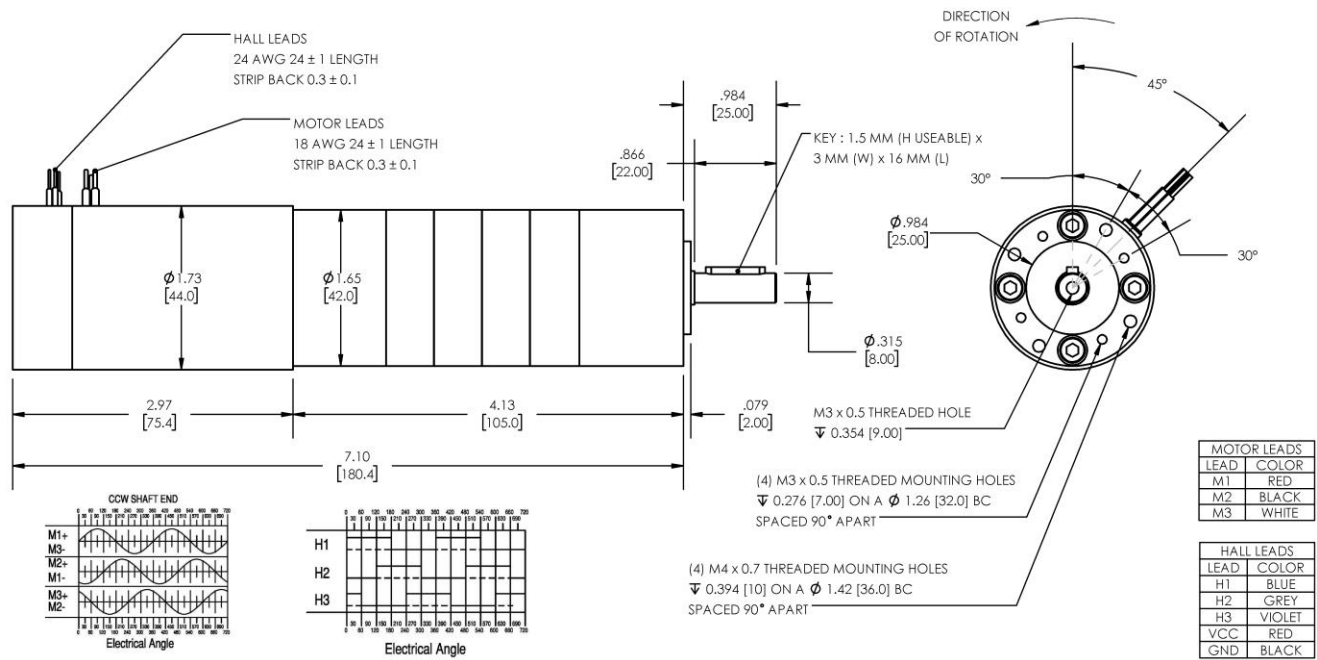


**Model Number:**

## MMP BL44-297K-180V GP42-1140



DIMENSIONS ARE INCHES [MM] UNLESS OTHERWISE STATED

PLANETARY GEARMOTOR OUTPUT PARAMETERS:	VALUE	UNITS	TOLERANCE
Gearhead Ratio (exact)	1139.73 : 1		
Gearhead Shaft Output Speed (at full-load)	4.8	RPM	MAX
Gearmotor Rated Continuous Torque	266	In-Lbs	MAX
Gearmotor Rated Peak Torque	<b>266++</b>	In-Lbs	----
Gearhead Standard Backlash	63	Arc Minutes	MAX
Gearhead Efficiency	65%	----	----
Output Shaft Radial Load Capacity	68	Lbs	MAX
Output Shaft Axial Load Capacity	25	Lbs	MAX
Gearmotor Total Weight	2.5	Lbs	MAX

**++ All Peak Torque values are dependent upon duty. Contact our sales office for details.**

DC MOTOR PERFORMANCE PARAMETERS:	VALUE	UNITS	TOLERANCE
Rated DC Voltage	180	DC VOLTS	----
Rated Continuous Current	0.16	AMPERES	----
No-Load Speed	5688	RPM	+/- 15%
Rated Speed	5493	RPM	+/- 15%
Rated Continuous Power Out	23	WATTS	+/- 15%
Rated Continuous Torque	5.7	OZ-IN	----
Peak Torque (motor only)	111	OZ-IN	----
No-Load Current	0.03	AMPERES	10%
Back EMF Constant (Ke)	31.4	V/KRPM	+/- 10%
Torque Constant (Kt)	42.5	OZ-IN/AMP	+/- 10%
DC Armature Resistance	45.80	OHMS	+/- 15%
Armature Inductance	40.37	mH	+/- 15%
Armature temperature	155	DEG. C	MAX

**NOTES:**

- ENCODER & BRAKE OPTIONS AVAILABLE – [FOLLOW THIS LINK FOR DETAILS](#)
- NEMA MOUNTING FLANGE OPTION AVAILABLE – [FOLLOW THIS LINK FOR DETAILS](#)

# MIDWEST MOTION PRODUCTS, INC

DESIGN, MANUFACTURING & DISTRIBUTION - MOTION CONTROL EQUIPMENT

[www.midwestmotion.com](http://www.midwestmotion.com)

email: [sales@midwestmotion.com](mailto:sales@midwestmotion.com)